

# Super Node Approach to Enhance Performance in Mobile Ad-hoc Network

Anzar Ahmad<sup>#1</sup>, Dr.R.C Joshi<sup>\*2</sup>,

<sup>#</sup> Associate Professor, Department of Electronic & Communication,

Graphic Era Univeristy, Dehradun (U.K) India)

Address Including Country Name

**Abstract** - The implementation of MANET for commercial purposes is not an easy task. Unlike other communication networks, wireless Mobile Ad-hoc Networks encounter many severe problems concerning routing, scalability and network management when the size of network becomes large. As a solution to these problems, clustering schemes are introduced for mobile ad-hoc network in order to organize the network topology. Many clustering techniques have been developed so far. Clustering is a method which divides large network nodes into small number of nodes which is known as clustering. Clustering improves network capacity and reduces the routing overhead and brings more efficiency and effectiveness to scalability and high mobility. Every cluster has one cluster leader which has much responsibility such as cluster maintenance, routing table updates, and the discovery of routes within the network. The other node named as gateway node setup the communication between two clusters. In this present approach the election of cluster head (CH) and gateway node separately has been removed completely. In the proposed technique cluster head node and gateway node is replaced by a solo node which is known as super node (SN). All the functions and responsibilities of cluster leader and gateway node is handled by the super node. An algorithm table is introduced in such a way that if super node goes down or walk away due to any reason then in the absence of super node which node will overtake the task of super node. This unique approach is simulated and compared with existing approach with the help of Exata simulator. The proposed approach reduces overheads and hence improve the overall efficiency and performance of the network.

**Keywords:** MANET, performance, efficiency, super node, scalability

## I. INTRODUCTION

The World has been moved to wireless technology. Now days, new wireless technologies are becoming part of our daily lives. They have been in advance popularity with the use of several small and smart portable devices. For to connecting these devices with internet some type of fixed network is

required such as access points or base stations which are not possible in many scenarios particularly when a person is not in the direct range of access point or base station. Thanks to wireless mobile ad hoc networks which solve these kinds of problems. Mobile ad hoc network are self-governing network having mobile nodes that are connected by multi-hop wireless links [32, 29]. The main idea of a MANET is that a network can be setup without the need for any central administration or prearranged infrastructure. In fact mobile ad-hoc networks present many challenges in front of the researchers because its mobility and dynamic nature. In addition to these bandwidth and nodes transmission power are scarce. Moreover scalability is very important issue to ad hoc network designers community because of large number of users and is an important matter with vital influence on capability and capacity. The scalability issue of MANET is addressed through a hierarchical approach that divides the large network into small networks (clusters). A cluster is fundamentally a subset of nodes of the network that satisfies a certain property. Clusters are analogous to cells in a wireless cellular network. By clustering the network becomes more manageable [32]. Ad-hoc networks are typically composed of nodes that communicate over wireless links without any central administration and , commercial interest in this type of networks continues to grow [2,25,26,27 32

## II. RELATED WORK

Routing is one of the important issues in ad-hoc network. Routing in mobile adhoc network has three major objectives [7] ,first one maximum steadfastness by selecting several alternative path if a node depart the network, second ,through the traffic towards the routes which have least cost among different path and third selecting the nodes with best response time and throughput. In mobile ad-hoc network routing can be classified as proactive and reactive. In proactive routing routers are maintained constantly within the network. In reactive routing protocol the path are determined only on requirement. Cluster based routing [9] is a appropriate way for routing in MANET. As each cluster has one cluster manager and one or more gateway node to connect to other cluster in the

network [1] [11][21]. Clustering approaches present a number of benefits for the medium access layer and the network layer in MANET [21]. The implementation of clustering schemes allows a better performance for the Medium Access Control (MAC) layer by improving the spatial reuse, throughput, scalability and power consumption. On the other hand, clustering helps routing at the network layer by lessening the size of the routing tables and by decreasing transmission overheads updating of routing tables due to frequent change in network topology [1][23][20]. Clustering provides collective topology information since the number of nodes of a cluster is smaller than the number of nodes of the entire network [13][14]. Therefore, each node in a cluster only stores a small part of the total network routing information [9][22]. In clustering techniques nodes are chosen to participate different roles in the network. commonly, three types of nodes are reported in clustering techniques: ordinary nodes which are simply members of a cluster, other node is called gateways node which is able to listen to transmissions from another node which is in a different cluster and cluster head(CH) which manages the cluster[1] [22][27][30].

**A. Ordinary nodes :**

Ordinary nodes are members of a cluster which do not have neighbors belonging to a different cluster [1].

**B. Gateway nodes**

Gateway nodes are nodes in a non-cluster head state located at the periphery of a cluster. These types of nodes are called gateways because they are able to listen to transmissions from

**C. Cluster heads**

Most clustering approaches for mobile ad hoc networks select a subset of nodes in order to form a network backbone that supports control functions. A set of the selected nodes are called cluster head (CH) and each node in the network is associated with one. Cluster heads are connected with one another directly or through gateway nodes [1]. The union of gateway nodes and cluster heads form a connected backbone. This connected backbone helps simplify functions such as channel access, bandwidth allocation, routing power control and virtual-circuit support [18].another node which is in a different cluster [24]. To accomplish this, a gateway node must have at least one neighbor that is a member of another cluster [21].

**III.PROBLEM FORMULATION**

The existing clustering technique cluster head (CH ) and gateway approach which is shown in fig 1 and proposed super node (SN) approach

is s shown in figure 2 , both the approaches have been simulated and compared for reliability/quality of service with the help of Exata cyber simulator..



Fig1: CH& gateway scenario

**IV. SIMULATION ENVIRONMENT**

Exata Cyber simulator is used to simulate and compared for both the approaches. Exata is a comprehensive suite of tools for emulating large wired and wireless networks. It uses simulation and emulation to predict the behavior and performance of networks to improve their design, operation, and management. Exata cyber provides a cost-effective and easy-to-use alternative to physical test beds that typically have high equipment costs, complex setup requirements and limited scalability. It creates a digital network replica that interfaces with real networks and applications.

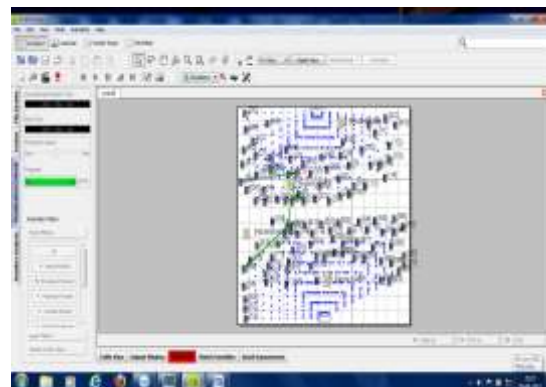


Fig2: Super node scenario

**A. Problem Definition**

The network consists 105 mobile nodes with AODV routing protocol enabled, and all nodes are randomly distributed with the mobility of ( 0-10 )m/sec. In existing approach Node 35 and 85 are Cluster head and nodes 5 and 8 are gateway nodes. In super node approach node number 35 and 85 are super node nodes and sending CBR file

**B. Simulation Setup:**

With the help of Exata cyber simulator, firstly we configure the profile for mobile ad-hoc network. There are three important configurations for standard application, mobility and placement, network layer and Routing algorithm.

Mobility configuration, related to description about the mobility of mobile nodes, and for this we set the three important parameters

**Table 1  
Mobility configuration**

S. No	Parameter	Value
1	Speed	0-12 m/s
2	Pause Time	0 s
3	Start Time	15 sec

**V. VALIDATION**

In the result analysis of CBR server with cluster head & gateway, and super node the end to end delay are trade off for overall performance of the network and as shown in Fig 3 and Fig4

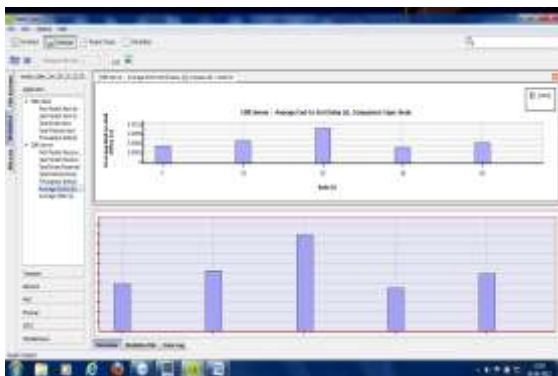


Fig3: Average end to end delay for Super node approach



Fig4: Average end to end delay in proposed super node approach

**B. Analysis for Average Jitter with CH & G and Super Node Approach**

In the result analysis of CBR server with cluster head & gateway, and Super node the average jitter is less in proposed approach showing overall

performance of the node as shown in the fig5 and fig6 and also less node is participating hence less overheads

An easy way to comply with the conference paper formatting requirements is to use this document as a template and simply type your text into it.

**A. Page Layout**

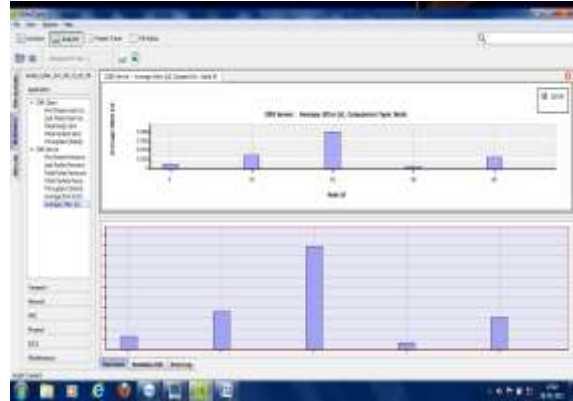


Fig5 : Average jitter forproch CH & G



Fig6: Average jitter for proposed approach

**C. Analysis for number of packets dropped in CH & G and Super Node Approach**

In the result analysis of CBR server with cluster head & gateway, and super node, the number of packets dropped in presented approach is less and overall performance of the network is very much improved as shown in the Fig7 and Fig 8

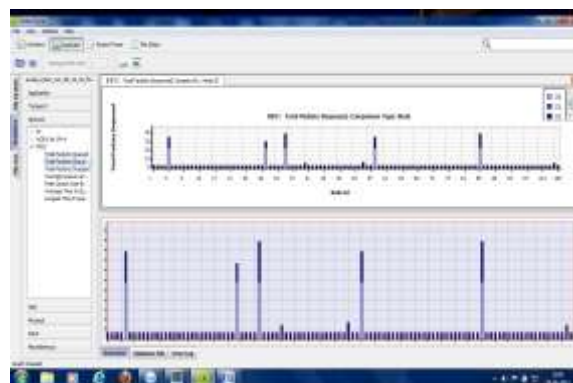
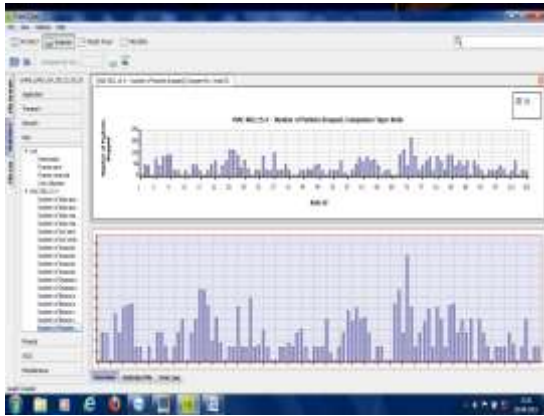


Fig7 :Mac 802.11.4 no. of pkt dropped in existing approach



Fg8: Mac 802.11.4 no. of packet dropped in propose Approach

### VI.CONCLUSION

Mobile ad hoc network is taking huge momentum in modern life because of its affordable device cost and reasonably priced services and user-friendliness. The proposed super node approach reduces the election of cluster head (CH) and election of gateway separately. The approach provides incremental quality of service in terms of end to end delay, jitter and number of packets dropped.

### ACKNOWLEDGMENT

This work is supported by Graphic Era University, Dehradun (India) for providing research Lab and my mentor Dr. S.C Gupta (Retd.Professor IIT Roorkee), Dr. R.Gowri ( HOD & Dean Academic, Graphic Era University) and Dr. R. C Joshi (Retd.Professor IIT Roorkee & Chancellor Graphic Era University, Dehradun (India).

### REFERENCES

[1] Ismail Ghazi ShayebA et al.Survey of Clustering Schemes for Mobile Ad-Hoc Network (MANET) American Journal of Scientific Research ISSN 1450-223X Issue 20(2011), pp.135-151 © EuroJournals Publishing,Inc.2011 <http://www.eurojournals.com/ajsr.htm>

[2] Anzar Ahamd et al. "A Cluster Head Gateway Approach For Deciding The Cluster Head In Mobile Adhoc Network" \International Conference on Computer Networks and Security" World Academic of Science Engineering and Technology(WASET) Journal in Singapore December 2011 ICCNS 2010

[3] Pin-Chuan Liu, Da-You Chen and Chin-Lin Hu," Analyzing The TCP Performance On Mobile Ad-Hoc Networks", International Conference 2011.

[4] R.S.Shaji ,R.S.Rajesh ,F.Rajeshand Ramakrishnan, "A Novel Routing And Service Migration Scheme For Communication Among Heterogeneous Devices in Pervasive Environment", "International Conference On Computer Communication And Electrical Technology", March 2011.

[5] Miguel A.Wister,Pablo Pancardo and Dante Avias-Torres,"Performance Evaluation Of AODV and DYMO s a Plattform for Rescue Task Applications in

MANETS", "International Conference On Advanced Information Networking And Applications"2011.

[6] Meysam Alikhany and Mohdi Abadi , "A Dynamic Clustering Based Approach For Anomaly Detection in AODV Based MANETS" , "International Symposium On Computer Networks and Distributed systems",2011.

[7] HiuLi, Xiaoguang Zhang,Ying Liu , "Energy Efficient Routing Based on Ant Colony Algorithm In Mine Equipment Monitoring",

[8] M.Q.Rafiq, M.Chauhan, S.Kumar, S.Husain "Mathematical simulation of Cochannel Interference Ratio for the Omni Directional Antenna in Mobile Computing" NCAICT, CSI Allahabad chapter, India,15-16 March,2008.

[9] M.Q.Rafiq, S.R Chauduri, S.Kumar, S.Husain "Deciding the Cluster Size on Behalf of Co- channel InterferenceRatio the Omni Directional Antenna in Mobile Computing"ISTE day conference New Delhi Chapter 31<sup>st</sup> May - June,08.

[10] P.Krishna, M.Chatterjee, N.H Vaidya,& D.K an," A Cluster based Approach for routing in Adhoc networks", Proceeding of 2<sup>nd</sup> SENIX Symposium on Mobile and Location Independent Computing.P.1 1995

[11] David B. Johnson and David A.Maltz, "Dynamic source routing in adhoc wireless networks". In Mobile Computing edited by Tomasz Imielinski and Hank Korth, chapter 5, pages 153-181. Kluwer Academic Publishers.

[12] David B. Johnson and David A. Maltz, "Protocols for adap tive wireless and mobile computing". In IEEE Personal Communications , 3(1), February 1996.

[13] Stephen Kent and Randall Atkinson, "Security Architecture for the Internet Protocol", Internet draft, draft-ietf-sec- arch-sec-07.txt, July 1998.

[14] Vincent D. Park and M. Scott Corson, "A performance comparison of the Temporally-Ordere Routing Algorithm And Ideal Link-state routing". In Proceedings of IEEE Symposium on Computers and Communication '98 , June 1998.

[15] I. Er and W. Seah, "Mobility-based d-hop clustering algorithm for mobile ad hoc networks," in Wireless Communications and Networking Conference, 2004. WCNC. 2004 IEEE, vol. 4, 2004, pp. 2359-2364.

[16] B.Das, E. Sivakumar,V Bhargavan,"Routing in backbone network using a virtual backbone", Proceeding of 6<sup>th</sup> International Conference on computer communication and network (IC3N'97),1997

[17] B.Das,V Bhargavan,"Routing in adhoc network using a spine", IEEE International Conference on computer &communication network (ICC'97),1997.

[18] J. Wu and J. Cao, "Connected k-hop clustering in ad hoc networks," in ICPP '05: Proceedings of the 2005 International Conference on Parallel Processing (ICPP'05). Washington, DC, USA: IEEE Computer Society,2005, pp. 373-380.

[19] Dharma Prakash Agrawal and Qing- An Zeng," Introduction to Wireless and Mobile System" University of Cincinnati.

[20] Mobile Ad -hoc Networks (MANET). URL: <http://www.ietf.org/html.charters/manet-charter.html>. (1998-11-29).

[21] L. Wang and S. Olariu, "Cluster maintenance in mobile ad-hoc networks,"Cluster Computing, vol. 8, no. 2- 3,pp.111-118, 2005.

[22] T. C. Hou and T. J. Tsai, "An access-based clustering protocol for multihop wireless ad hoc networks," IEEE JSAC, vol. 19, no. 7, pp.1201-1210, 2001.

[23] I. Er and W. Seah, "Mobility-based d-hop clustering algorithm for mobile ad hoc networks," in Wireless Communications and Networking Conference, 2004. WCNC. 2004 IEEE, vol. 4, 2004, pp. 2359-2364.

- [24] J. Wu and J. Cao, "Connected k-hop clustering in ad hoc networks," in ICPP '05: Proceedings of the 2005 International Conference on Parallel Processing (ICPP'05). Washington, DC, USA: IEEE Computer Society, 2005, pp. 373-380.
- [25] V. Vetri Selvi and Ranjani Parthasarathi, "Trace Based Mobility Model to Support Quality of Service in Ad Hoc Networks", Trusted Internet Workshop (TIW05) held along with 12th International Conference on High Performance Computing (HiPC2005), 18-21 Dec. 2005, India.
- [26] S.S.Kulkarni, G.R.Dattatreya, H.Martinez and R.Soto "Adaptive Control of Heterogeneous Ad Hoc Networks", Wireless Communications and Mobile Computing, Vol-4, 963-975, August 2004.
- [27] Ram Ramanathan and Jason Redi, "A Brief Overview of Ad Hoc Networks - Challenges and Directions", IEEE Communications Magazine 50th Anniversary Commemorative Issue, 20-22, May 2002.
- [28] X. Hong, M. Gerla, G. Pei, and C.-C. Chiang, "A group mobility model for ad hoc wireless networks," in MSWiM '99: Proceedings of the 2nd ACM international workshop on Modeling, analysis and simulation of wireless and mobile systems. New York, NY, USA: ACM Press, 1999, pp. 53- 60.
- [29] C. Bettstetter, "The cluster density of a distributed clustering algorithm in ad hoc networks," in Communications, 2004 IEEE International Conference on, vol. 7, 2004, pp. 4336-4340.
- [30] C. Prehofer and C. Bettstetter, "Self-organization in communication networks: principles and design paradigms," IEEE Communications Magazine, vol. 43, no. 7, pp. 78-85, 2005.